

Plastek

WATER PRODUCTS



because water is too precious to waste

www.bvci.com.au

PRODUCT RANGE

ROUND TANKS | URBAN

If you have a big yard, expansive gardens or a pool (or your kids just love the sprinkler!), a Round Urban tank might be the most appropriate solution. They look great, they're surprisingly compact, and they're available in a wide range of sizes and colours. So you're sure to find one that blends in perfectly.

TANK COLOURS > SEE PAGE 4



335L (75 Gallons) Round Smooth
760mm x 890mm (Dia. x H)
Inlet Height: 890mm
Colour: Beige



450L (100 Gallons) Round Smooth
760mm x 1270mm (Dia x H)
Inlet Height: 1270mm
Colour: Birch Grey



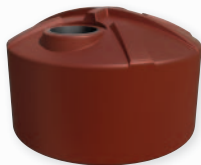
675L (150 Gallons) Round Smooth
760mm x 1700mm (Dia x H)
Inlet Height: 1700mm
Colour: Tank Black



900L (200 Gallons) Round Smooth
1070mm x 1400mm (Dia x H)
Inlet Height: 1400mm
Colour: Earthtone



2250L (500 Gallons) Round Smooth
1500mm x 1700mm (Dia x H)
Inlet Height: 1700mm
Colour: Heritage Green



2250L (500 Gallons) Sqft Smooth
1860mm x 1170mm (Dia x H)
Inlet Height: 1050mm
Colour: Heritage Red



2250L (500 Gallons) Round Corrugated
1400mm x 1630mm (Dia. x H)
Inlet Height: 1560mm
Colour: Merino



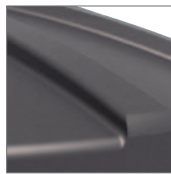
3000L (660 Gallons) Round Banded
1400mm x 2270mm (Dia. x H)
Inlet Height: 2200mm
Colour: White



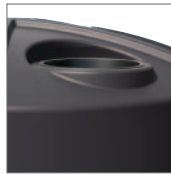
3200L (700 Gallons) Round Smooth
1750mm x 1790mm (Dia x H)
Inlet Height: 1690mm
Colour: Mist Green



4500L (1000 Gallons) Round Corru.
1820mm x 1980mm (Dia x H)
Inlet Height: 1900mm
Colour: Smooth Cream



1 Ribs in the roof give added strength



2 Under the Leaf strainer is a UV cover to block sunlight that causes algae growth



3 Unique textured finish blends better with the environment



5000L (1100 Gallons) Round Banded
2010mm x 1970mm (Dia x H)
Inlet Height: 1900mm
Colour: Slate Grey



10000L (2200 Gallons) Round Smooth
2550mm x 2480mm (Dia x H), Inlet Height: 2350mm, Colour: Metal Grey



9000L (2000 Gallons) Round Corrugated
2540mm x 2200 mm (Dia x H)
Inlet Height: 1950mm
Colour: Beige



5000L (1100 Gallons) Round Smooth
1860mm x 2100mm (Dia x H)
Inlet Height: 2060mm
Colour: Torres Blue



ROUND TANKS | RURAL

Our Round Rural water tanks are for the farmers, breeders, market-gardeners, nurseries and acreage-owners amongst us. They're tailor-made to see you through the dry spells, even in the face of serious water consumption or irrigation requirements.

RURAL TROUGHS > SEE PAGE 5



13500L (3000 Gallons) Round Corrugated
3050mm x 2350mm (Dia x H)
Inlet Height: 2050mm, Colour: Earthtone



22700L (5000 Gallons) Round Smooth
3650mm x 2680mm (Dia. x H)
Inlet Height: 2390mm, Colour: Mountain Blue



22700L (5000 Gallons) Round Corrugated
3650mm x 2950mm (Dia. x H)
Inlet Height: 2560mm, Colour: Heritage Red



27250L (6000 Gallons) Round Smooth
3650mm x 3100mm (Dia. x H), Inlet Height: 2850mm, Colour: Rivergum

FEATURES

- Rigid single-piece construction using more resin for a thicker wall
- Large 500mm leaf strainer in all larger tanks complete with U.V. Cover
- UV stabilised
- Compliant with Australian Standards
- Food-grade Polyethylene materials
- Government Rebates available

TANK STYLES



Smooth



Banded



Corrugated

INDUSTRIAL TANKS

Custom fitted liquid feed and fertilizer applications. Naturally, we can manufacture and fit out your tank to your exact specifications, including the fabrication of various fittings, from extension flanges, backing plates and full face flanges, to threaded fittings, sight glasses and float level assemblies. What's more, every tank is delivered complete with a Hydrostatic and Fabrication Inspection report.



22,700L (5,000 Gallons) Round Smooth - Liquid Feed Fitted Tank
Dimensions: 3650mm x 2680mm (Dia x H), Inlet Height: 2390mm



SLIMLINE TANKS

When space is at a premium, a slimline tank is your very best friend. Especially one from Plastek. Our slimlines are designed to be as inconspicuous as possible. To blend — and fit — right in. Of course, they still hold their own when it comes to water storage; they can hold anywhere from 495 litres to 5,000 litres each!



495L (110 Gallons) Slimline Smooth
1170mm x 580mm x 1070mm (LWH)
Inlet Height: 1070mm, Colour: Tank White



2100L (462 Gallons) Slimline Smooth
2420mm x 760mm x 1650mm (LWH)
Inlet Height: 1650mm, Colour: Mist Green



2500L (550 Gallons) Slimline Smooth
2510mm x 780mm x 1910mm (LWH)
Inlet Height: 1910mm, Colour: Merino



3500L (770 Gallons) Slimline Smooth
3020mm x 780mm x 1915mm (LWH)
Inlet Height: 1920mm, Colour: Metal Grey



FEATURES

- 495 – 5,000 litre capacity
- Full range of colours available
- 10 Year fix or replace warranty
- Government Rebates apply
- Can be connected to toilet and washing machine
- Link multiple tanks together for a greater storage capacity
- Standard inclusions; Overflow, strainer and brass fitting

5000L (1100 Gallons) Slimline Smooth
3100mm x 1150mm x 1950mm (LWH), Inlet Height: 1950mm, Colour: Rivergum

POPULAR TANK COLOURS

The days of the ugly old rainwater tank are long gone. With these fashionable – yet subtle – colours available, your Plastek tank will go nicely, wherever you decide to put it.

STANDARD COLOURS



OPTIONAL COLOURS



Other colours are available upon request. Colours are a guide only and not for colour accuracy. COLORBOND® and the colour names are registered trademarks of Blue Scope Steel Ltd.™ Colour names are trademarks of Blue Scope Steel Ltd.



RAINREVIVA TANK TO TOILET SYSTEMS

The Rainreviva Pump & Quick Switch Pump Box takes our unique design one step further by incorporating all components inside our pump box - plumbed up and ready to go! The sole purpose of the Quick Switch is to make installation simple, quick and efficient, taking the complexity out of mains switching systems. Our unique design automatically switches water from tank to mains and back without the use of a float lead.

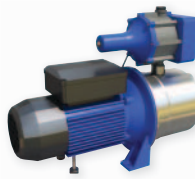
RainReviva Pump and Quick Switch Pump Box
540mm x 375mm x 580mm (LWH)
Colour: Earthtone



FEATURES

- Quick installation
- No float lead required
- 2 Year replacement warranty
- Pump AS4020 certified
- Quick switch Watermarked

ACCESSORIES



RainReviva Pressure Pump
40lpm at 160kPa - 600 watt

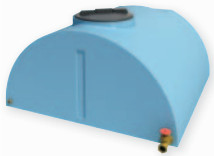


Pump Cover Smooth, Colour: Rivergum
495mm x 380mm x 560mm (LWH)

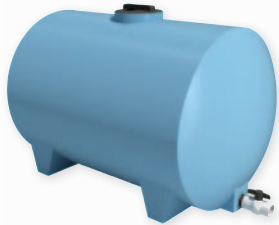
SUBMERSIBLE KIT AVAILABLE SOON

UTE TANKS

The weather never gets any kinder to a farmer, so it's nice to know technology can occasionally lend a helping hand. Our range of hexene copolymer resin ute tanks make it surprisingly easy for you to haul water where your stock needs it most. Available in sizes from 495 litres up to 810 litres, they're tough and UV resistant, and come with a convenient screw-top lid, so cleaning and filling is a breeze.



495L (110 Gallons) Ute Tank
1200mm x 1200mm x 660mm (LWH)



585L (130 Gallons) Ute Tank
1350mm x 800mm x 860mm (LWH)



810L (180 Gallons) Ute Tank
1520mm x 940mm x 1000mm (LWH)



Plastek also have a full range of concrete troughs available from 240 Litre to 1636 Litre. Limited distribution... call now for a price!

POLY TROUGHS

Strong, easy to fill, easy to empty, easy to clean and easy to transport. There's no better way to describe a Plastek poly trough. Available in sizes from 225 litres all the way up to 5000 litres, they're light, but have a square lip for extra strength. They also have a tamper proof float valve that shuts off when full, a concealed inlet, an easy-empty drainage plug, a smooth finish for easy cleaning and they nestle neatly for transportation.



225L (50 Gallons) Poly Trough
1120mm x 840mm x 350mm (LWH)



450L (100 Gallons) Poly Trough
1520mm x 840mm x 480mm (LWH)



2,500L (550 Gallons) Poly Trough
2400mm x 760mm (Dia x H)



5,000L (1100 Gallons) Poly Trough
3100mm x 760mm (Dia x H)

NEED INFO? LOOK US UP www.bvci.com.au

Browse our website for more information on our product range



FEATURES

Plastek rainwater tanks are built in Australia, for Australian conditions. They're built tough, they're built to exceed Australian standards, and they're built intelligently. Because once your water tank's installed, you don't want to have to think about it at all. Our tanks just do what they're supposed to do. So you can too.

- 335 – 27,250 litre capacity.
- All tank roofs are self supporting, so no need for a centre support pole (and no OH&S issues with confined space & entry, etc.).
- UV cover under leaf strainer to block sunlight that causes algae growth.
- Polyethylene material complies with Australian standard AS2070 (food grade) and AS4020 (drinking water).
- UV stabilised to withstand Australia's harsh sun.
- Unique textured finish blends better with the environment than the glossy plastic look of other tanks. Corrugated profile also available.
- Maximum shot weight of plastic material to guarantee ample wall thickness.
- Walls are thicker at the bottom for maximum strength where the water pressure is greatest.
- Plastek tank moulds are designed and built to separate at the top ensuring part line is positioned in the least stressed area. Poorly designed moulds with parting lines down the sides lead to weak areas in the tanks wall causing splitting.
- All tanks come with gate or ball valves (depending on tank size) and overflows.
- Tanks are tested using inhouse facilities that include ultrasonic thickness measurements and impact testing.
- Predicted 25 year lifespan (using Finite Element Analysis (FEA))

DELIVERY

We deliver for free, anywhere within a 500km radius of our Ballarat manufacturing plant. All larger tanks are delivered to site (some conditions apply with permit zones). Please make sure there's sufficient access for our trucks. They're approx 19 metres long, 3.5 metres wide and 4.6 metres in height. And they have a 20 metre turning circle. If there's not enough room, our drivers will choose another

location to unload. Please note: our drivers don't install or plumb tanks. For more information about our unloading requirements, please call us on 1800 065 356.

MOVING AND POSITIONING TANKS

Tanks can be quite awkward things to move, so make sure you have enough people on hand to do the job properly.

Tank Size	No. of People Required
2000g / 3000g	2 People
5000g	3 People
6000g	4 People

ROUND TANKS | INSTALLATION

1. On a flat level site, build a well compacted 75mm sand base, with diameter 500mm larger than the tank's base, and a retaining beam to prevent erosion.
2. Install a flexible suction hose, at least 300mm long, after the gate valve, to reduce stress on the tank wall. **IMPORTANT:** Poly pipe is NOT suitable as it is too rigid.
3. Direct overflow away from the base, and ensure it has more capacity than the sum of the inlet pipes.
4. If you're fitting the tank to a tank stand, ensure the spacing of the hardwood decking is a maximum of 20mm. **NOTE:** If you don't follow these instructions when installing your tank, you will void your warranty.

SLIMLINE TANKS | INSTALLATION

Slimline tanks must be installed on a concrete slab.

1. Lay a level concrete slab at least 100mm deep, and 50mm wider than the base of the tank. Place a layer of reinforcing mesh 25mm from the bottom.
2. Make sure all the corners of your formwork are filled with concrete, and there are no air pockets under the surface of the slab.
3. Smooth and level the top of the slab, then finish with a timber or steel trowel.
4. Remove the Slimline temporary wheel system when tank is in position. **NOTE:** If you don't follow these instructions when installing your tank, you will void your warranty.



ROUND TANKS

SIZE		TYPE	STYLE	DIAMETER		LENGTH		WIDTH		INLET HEIGHT		HEIGHT		PRICE \$
LITRES	GALLONS			METRIC	IMPERIAL	METRIC	IMPERIAL	METRIC	IMPERIAL	METRIC	IMPERIAL	METRIC	IMPERIAL	
335 L	75	Round	Smooth	760	2'6"					890	2'11"	890	2'11"	\$
450 L	100	Round	Smooth	760	2'6"					1270	4'2"	1270	4'2"	\$
675 L	150	Round Tall	Smooth	760	2'6"					1700	5'7"	1700	5'7"	\$
900 L	200	Round	Smooth	1070	3'6"					1400	4'7"	1400	4'7"	\$
2250 L	500	Round	Smooth	1500	4'11"					1700	5'7"	1700	5'7"	\$
2250 L	500	Round Sqd	Smooth	1860	6'1"					1050	3'5"	1170	3'10"	\$
2250 L	500	Round	Corrugated	1400	4'7"					1560	5'1"	1630	5'4"	\$
3000 L	660	Round	Banded	1400	4'7"					2200	7'3"	2270	7'5"	\$
3200 L	700	Round	Smooth	1750	5'9"					1690	5'7"	1790	5'11"	\$
4500 L	1000	Round	Corrugated	1820	6'0"					1900	6'3"	1980	6'6"	\$
5000 L	1100	Round	Banded	2010	7'0"					1900	6'4"	1970	6'5"	\$
5000 L	1100	Round	Smooth	1860	6'1"					2060	6'9"	2100	6'11"	\$
9000 L	2000	Round	Corrugated	2540	8'4"					1950	6'5"	2200	7'3"	\$
10000 L	2200	Round	Smooth	2550	8'4"					2350	7'9"	2480	8'2"	\$
13500 L	3000	Round	Corrugated	3050	10'0"					2050	6'8"	2350	7'9"	\$
22700 L	5000	Round	Corrugated	3650	12'0"					2560	8'5"	2950	9'8"	\$
22700 L	5000	Round	Smooth	3650	12'0"					2390	7'10"	2680	8'10"	\$
27250 L	6000	Round	Smooth	3650	12'0"					2850	9'5"	3100	10'3"	\$

TANK RANGE

SLIMLINE TANKS

SIZE		TYPE	STYLE	DIAMETER		LENGTH		WIDTH		INLET HEIGHT		HEIGHT		PRICE \$
LITRES	GALLONS			METRIC	IMPERIAL	METRIC	IMPERIAL	METRIC	IMPERIAL	METRIC	IMPERIAL	METRIC	IMPERIAL	
495 L	110	Slimline	Smooth			1170	3'10"	580	1'11"	1070	3'6"	1070	3'6"	\$
2100 L	462	Slimline	Smooth			2420	8'0"	760	2'6"	1650	5'5"	1650	5'5"	\$
2500 L	550	Slimline	Smooth			2510	8'3"	780	2'6"	1910	6'3"	1910	6'3"	\$
3500 L	770	Slimline	Smooth			3020	9'11"	780	2'6"	1915	6'3"	1920	6'4"	\$
5000 L	1100	Slimline	Smooth			3100	10'2"	1150	3'8"	1950	6'4"	1960	6'5"	\$

PUMP COVER

DESCRIPTION	TYPE	STYLE	LENGTH		WIDTH		HEIGHT		PRICE \$
			METRIC	IMPERIAL	METRIC	IMPERIAL	METRIC	IMPERIAL	
Pump Covers	Pump Cover	Smooth	495	1'7"	380	1'4"	560	1'9"	\$

RAINREVIVA PUMP BOX

DESCRIPTION	VOLTAGE VAC	PRESSURE KPA	MAX HEAD METERS	MAX FLOW LPM	LENGTH MM	WIDTH MM	HEIGHT MM	PRICE \$
RainReviva Pump Box	240	500	36	50	540	375	580	\$
RainReviva Pump		240	500	36	50			\$

UTE CARTAGE TANKS

SIZE		TYPE	STYLE	DIAMETER		LENGTH		WIDTH		INLET HEIGHT		HEIGHT		PRICE \$
LITRES	GALLONS			METRIC	IMPERIAL	METRIC	IMPERIAL	METRIC	IMPERIAL	METRIC	IMPERIAL	METRIC	IMPERIAL	
495 L	110	Mobile	Smooth			1200	4'0"	1200	4'0"	660	2'2"	660	2'2"	\$
585 L	130	Mobile	Smooth			1350	4'5"	800	2'7"	860	2'10"	860	2'10"	\$
810 L	180	Mobile	Smooth			1520	5'0"	940	3'1"	1000	3'3"	1000	3'3"	\$

POLY STOCK TROUGHS

SIZE		TYPE	STYLE	DIAMETER		LENGTH		WIDTH		INLET HEIGHT		HEIGHT		PRICE \$
LITRES	GALLONS			METRIC	IMPERIAL	METRIC	IMPERIAL	METRIC	IMPERIAL	METRIC	IMPERIAL	METRIC	IMPERIAL	
225 L	50	Rectangular	Smooth			1120	3'8"	840	2'9"	350	1'2"	350	1'2"	\$
450 L	100	Rectangular	Smooth			1520	5'0"	840	2'9"	480	1'7"	480	1'7"	\$
2500 L	550	Round	Smooth	2400	7'8"					760	2'6"	760	2'6"	\$
5000 L	1100	Round	Smooth	3100	10'2"					760	2'6"	760	2'6"	\$

NEED INFO? LOOK US UP www.bvci.com.au

Browse our website for more information on our product range



WHY PLASTEK

Why Plastek? Because we're a local company that understands what other locals need. We've been operating out of our manufacturing plant in Ballarat since 1994, so we know what the local elements — and the local livestock — can dish out.

As a result, our products are built smarter. All our poly products are UV stabilised, our tanks are pleasing on the eye, and strongest where the water pressure is greatest (and have the warranty to match). Our troughs and ute tanks are tough, durable and easy to use. And, of course, all our accessories are quality too.

But the biggest reason to choose Plastek is simply because you'll get the product you need. A proven product that will get the job done. Simple.

OUR DIFFERENCE

Tanks have been our business since 1983. And if we've learned one thing since then, it's that making things easy for you, ultimately makes things easy for us.

When we plan and quality control things properly, we get the job done quicker, with fewer hassles and a much shorter lead time. When we treat you professionally, deliver the results you're after, and actually follow up, you keep coming back. And when we customise to your requirements, we don't waste time trying to force a square peg into a round hole.

We also think that being wholly Australian owned is very important. It means we know what Australians need — and we care about delivering it, that we know how tough Australian conditions are, and that our entire range of rainwater tanks can withstand those conditions.

QUALITY GUARANTEE

All Plastek tanks are guaranteed against faulty workmanship and manufacturing defects — They come with a 10 year fix or replace warranty.

We can offer such a great warranty because we know our products are built to last. They're built using the finest grade polyethylene, formulated to withstand Australia's harsh sun, and they're built smart, so they can withstand the stress of day to day use.

GOT A QUESTION? FREECALL 1800 065 356

If you'd like to discuss your tank requirements, give us a call. You'll speak with a person, not a machine! Someone who specialises in tanks, and is happy to take the time to offer advice and guidance.

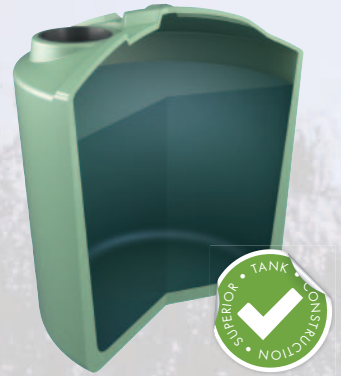


BVC Pty Ltd ABN 88 108 718 350
 73 Carngham Road Ballarat 3351
 Freecall: 1800 065 356
 Tel: 03 5335 8741
 Fax: 03 5336 1118
 Email: plastek@bvci.com.au
www.bvci.com.au

The information in this publication is a general guide only and BVC Pty Ltd reserves the right to change specifications without notice.

BVC PTY LTD A DIVISION OF STRONGFORM GROUP

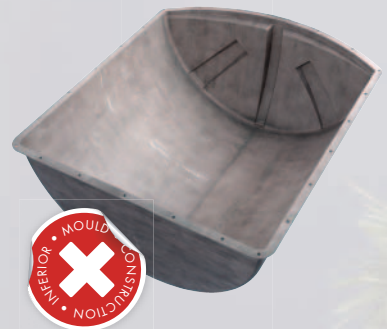
TANK CONSTRUCTION



The walls of our tanks are tapered from top to bottom to provide extra strength where the water pressure is the greatest.



Plastek moulds are designed and built to separate at the top. The part line on the product is always in the least stressed area.



Poorly designed moulds with parting lines down the sides, lead to weak areas in the tanks wall which can cause splitting.

Distributed by